

24小时服务热线  
24-hour service hotline

4006-05-4007

## 菱高快速电梯有限公司

LINGGAO EXPRESS ELEVATOR CO., LTD.

地址: 江苏省苏州市吴江区震泽镇大船港开发区

Add: Big Ship Harbor Development Zone, Zhenze Town, Wujiang District, Suzhou City, Jiangsu Province, China

电话(Tel): 0512-63785176 0512-63785276

传真(Fax): 0512-63785876 邮编(P.C): 215231

E-mail: lg@gelevator.com

网址(Web): www.lgelevator.com

本书为一般信息类出版物, 我们保留随时更改产品设计和说明的权利。  
本书的任何字句, 无论其字面意思或含义, 对于任何产品及该产品的用途和质量, 或者任何购销合同条款的表述与更改均不承担任何责任。

2020年1月份印刷



扫二维码进入菱高快速电梯官网  
Scan two-dimensional code into  
LINGGAO express elevator



LG Express Lift

# LINGGAO EXPRESS ELEVATOR

载货电梯系列  
Freight elevator series



STM 盛腾传媒 0573-8133500 18969047066

## 菱驾天地间 高处看世界

Linggao express elevators are popular all over the world  
Overlook the world from height



从工艺到品质，从功能到性能，每一部被精心打造的电梯都经历了千锤百炼，凝聚了设计的力量，至此，让电梯丰富建筑，让建筑延伸梦想。菱高快速，在动静中融智慧，于无声处见精彩。

From technology to quality, from function to performance, every carefully manufactured elevator has been forged and tempered. It concentrates with design strength. Elevator enriches building. Building extends your dreams. Linggao express combines with intelligence in kinetic / static state. It peacefully sets forth splendor.



★ 引进美国技术 ★



★ 高标准安全生产 ★



★ 传奇品质典范 ★

# Intellectual technology superb innovation

## 智能科技 极致创新



Highly integrated intellectual control system

### 高集成智能型控制系统

32位双CPU，主从CPU相互监控，更大程度提高了数据处理速度；系统内设置的高智能微电脑模块，对电梯运行实施最安全、精确、高效的管理控制。

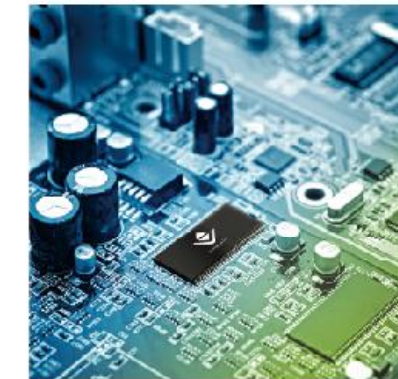
32-digit double-CPU and inter-monitor of master-slave CPU enhance data processing speed to a greater degree. System sets highly intellectual micro-computer module. It executes the most secure, accurate and effective management control to elevator operation.

Highly intellectual micro-computer system

### 高智能的微机系统

菱高快速载货电梯采用微机控制系统实现无触点控制，操作简便，可靠性高。对电梯进行全闭环的控制技术，有效提升运行性能，降低功耗。

Linggao express freight elevator applies micro-computer control system to fulfill non-contact control. It is simple and convenient in operation, high in reliability. It carries out fully closed loop control technology to elevator. It effectively increases running performance, reduces power consumption.



Light curtain protection

### 光幕保护

在电梯入口处形成一道道光幕保护屏障，对于任何进入其探测范围内的物体都能做出灵敏反应，有效地保护人货安全。在轿门所在平面具有密集的红红外光幕，人眼无法看见，使电梯入口更加美观。

It forms lots of light curtain protection barriers in elevator entry. It sensitively reacts to any object that enters into probing range. It effectively protects safety of both human and goods. It has intensive infrared light curtain in car door plane. It can not be seen by human eyes. It brings about the more attractive elevator entry.



AC variable frequency door machine

### 交流变频门机

采用先进技术的变频门机控制系统、交流变频电机和变频门机机械系统，不仅提高了电梯运行时的安全性和灵敏性，而且节能降耗，适于现代化运输越来越高的要求。

It applies variable frequency door machine control system, AC variable frequency motor, variable frequency door machine mechanical system with advanced technology. It enhances safe and sensitive elevator operation. It saves energy and loss. It adapts to the higher and higher modern transport requirements.



# Automobile elevator

## 汽车电梯

A parking harbor for your beloved car

### 给您的爱车一个停靠的港湾

菱高快速汽车电梯引进国际成熟的汽车升降技术，经过吸收、转化、提升，而开发生产的汽车升降梯，先进的技术保证了因轿厢受力不均匀导致曳引系统负载加重而产生的噪音并引起轿厢晃动这一不利因素的不存在，优化了这一系列产品的特性。

Linggao Express Automobile Elevator introduces the international well-developed automobile elevation technology. It develops and manufactures Linggao automobile elevators through absorbing, transforming, enhancing such high tech. Advanced technology removes bad thing of shaking elevator car because of burdened load of traction system, uneven encountered force to elevator car. It also optimizes the characteristics of the product series.



#### ■ 双操纵箱按钮 Dual operation buttons box

轿厢内设有两只操纵箱按钮，司机无须走出汽车，就可以操纵电梯。

There are two operation box buttons in the car. Therefore the driver can operate the elevator in the car without stepping out of it.

#### ■ 专门显示系统 Special display system

专门的电路控制及显示系统，既方便轿内司机，又方便轿外候梯的司机。

Special circuit control and display system are convenient for the drivers inside / outside the car.

#### ■ 安全导向装置 Safe guide device

轿内地面设有安全导向装置，保证了电梯及汽车的安全。

Safety guide device sets in the car ground to ensure fine security of both cars and elevators.

#### ■ 可以前后开门 Front / rear door opening are available

电梯轿厢设有前后开门，更方便了汽车进出轿厢和安全。

The elevator car sets front / rear door opening which is more convenient for the safety sector and for the cars to enter into / exit from the elevator cars.



# Car decoration design

## 轿厢装潢设计



**LG20-H01**

吊顶：喷涂钢板	Ceiling：Paint steel
轿壁/轿门：喷涂钢板	Car wall/Car door：Paint steel
照明：节能灯	Illumination:Energy-saving light
开门方式：旁开式	Door opening mode：Side opening
地板：花纹钢板	Floor：Checkered plate



**LG20-H02**

吊顶：发纹不锈钢	Ceiling：Hairline stainless steel
轿壁/轿门：发纹不锈钢	Car wall/Car door：Hairline stainless steel
照明：节能灯	Illumination：Energy-saving light
开门方式：中分双折式	Door opening mode：Center-opening & double folded type
地板：花纹钢板	Floor：Checkered plate

# Operation panel 操纵箱

菱高快速电梯的操纵箱，流线型的造型，新颖别致，极富现代感；按照人体工程学设计的显示器，操作方便自如。  
Operation box of Linggao express elevator has streamline model. It is novel, distinctive. It is rich in contemporary sense. Display is designed according to ergonomics principle. It is free and convenient in operation.



# Landing door 厅门



中分式  
Center opening



旁开式  
Side opening



双折中分式  
Double-folded center opening type



三折中分式  
3-Folded center opening type

Color card series  
色卡系列



● 图片系电脑绘制，可能与实际略有不同。  
The pictures are plotted by computer and are likely somewhat different from the actual products.

# Function Table

## 电梯功能表

### 控制功能 Control function

井道楼层距离自学习 Well and floor distance self-tuning	S
上电再平层 Power on re-leveling	S
轿内及层站微动指令按钮 Micro-touch button for car	S
启动保护控制 Start protection control	S
轿厢到站钟 Car arrival chime	O
变频驱动 VVVF drive	S
门机变频驱动 VVVF drive for door operator	S
轿厢副操纵箱 The second car operation panel	O

### 安全功能 Safety function

光幕保护 Light curtain protection	S
超载停梯 Overload holding stop	S
端站强迫减速保护 Terminal forced slow-down protection	S
上下限位及上下极限保护 Up/down limit and terminal protection	S
下行超速保护 Down over speed protection	S
上行超速保护 Up over speed protection	S
安全停层 Safely stop	S
紧急电动运行 Inching operation	S
检修操作 Inspection operation	S
停电应急平层装置 Power failure emergency leveling device	O
防捣乱 Anti- nuisance	S
消防返回 Fire emergency return	S

### 信息功能 Information function

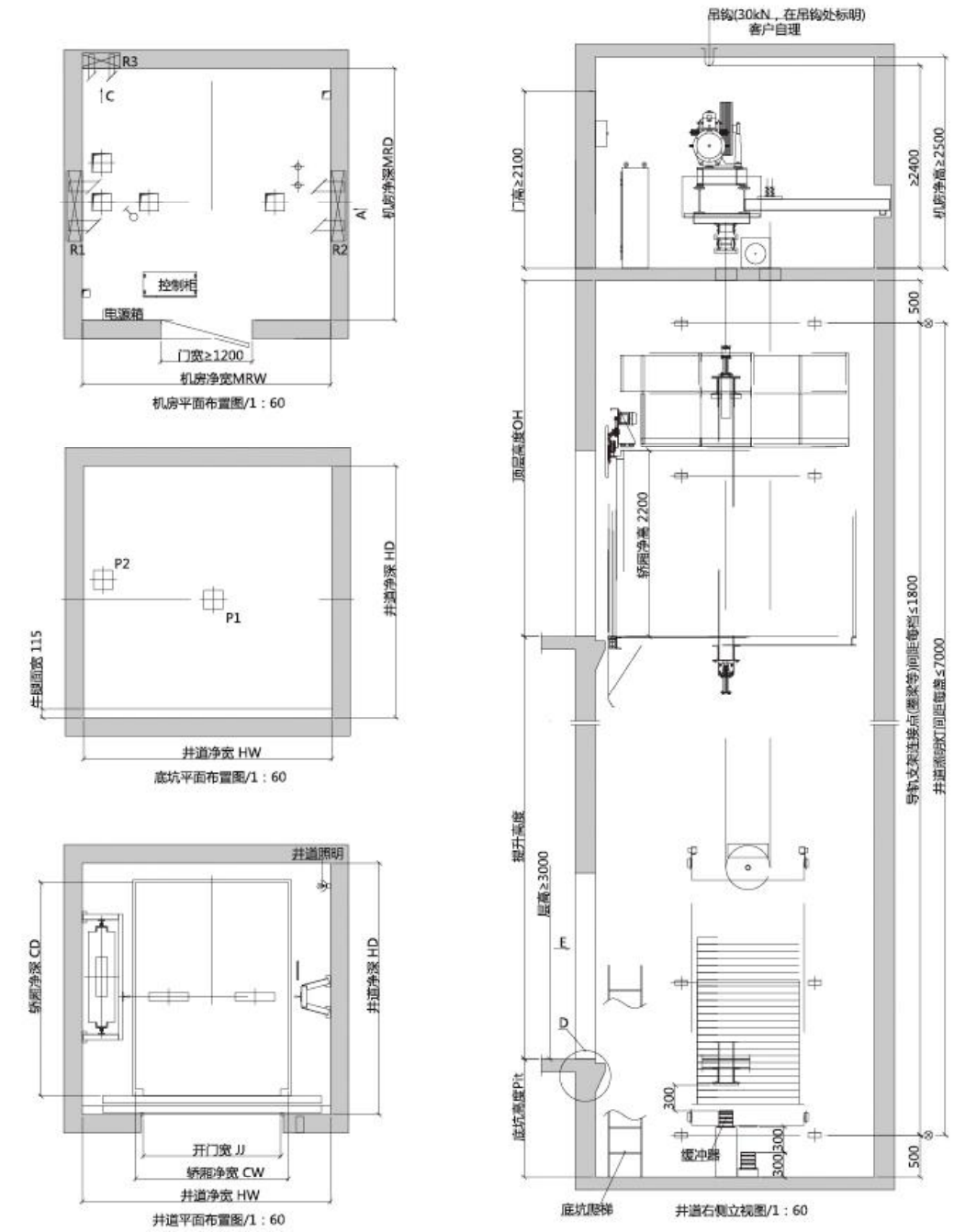
全集选控制 Full collective control	S
满载直驶 Full-load bypass	S
远程关闭 Main floor shut off	S
故障自诊断 Self diagnosis of breakdown	S
五方通话装置 Five-way communication	S
轿厢警铃 Car alarm	S
轿内楼层、方向指示 Floor and direction indicator in the car	S
层站楼层、方向指示 Floor and direction indicator at hall	S
语音报站 Voice announcement	O
交通指示 (汽车电梯) Traffic dispatch	O

### 乘客舒适功能 Comfortable function

应急照明 Emergency car lighting	S
轿厢风扇、照明自动关闭 Car ventilation light automatically shut off	S
电梯门重复开门 Repeated door closing	S
本层重开门 Reopen with hall call	S
即时开门 Express door closing	S
停梯开门 Car stop and door open	S
开门时间延长 Door opening time extending	S
S-标配 Standard O-可选 需加价 Optional	

## Freight elevator construction sketch

### 载货电梯土建图



型号	载重 KG	速度 m/s	轿厢规格 (mm) CWxCD	开门尺寸 (mm) JJxOPH	井道尺寸 (mm) HWxHD	机房尺寸 (mm) MRWxMRD	底坑深度 (mm) Pit	顶层高度 (mm) OH	功率	作用力 (N)				
										R1	R2	R3	P1	P2
LGH(1000/0.5)	1000	0.5-1.0	1400x1700	1200x2100	2200x2200	2500x2500	1500	4200	7.5	54600	47800	6000	88000	68000
LGH(1600/0.5)	1600	0.5-1.0	1500x2300	1400x2100	2500x2800	2500x2800	1500	4200	11	67600	58200	7400	124000	92000
LGH(2000/0.5)	2000	0.5-1.0	1700x2300	1500x2100	2850x2800	2850x2800	1500	4200	11	85600	55200	8400	144000	104000
LGH(3000/0.5)	3000	0.5-1.0	2000x2800	1800x2100	3250x3300	3250x3300	1500	4200	15	144800	75200	12000	224000	164000
LGH(4000/0.5)	4000	0.25-0.5	2200x3300	2200x2300	3700x3800	3700x3800	1500	5000	18.5	190000	105200	16400	148000	108000
LGH(5000/0.5)	5000	0.25-0.5	2400x3600	2200x2300	3800x4100	3800x4100	1500	5000	22	213800	117200	18200	172000	122000

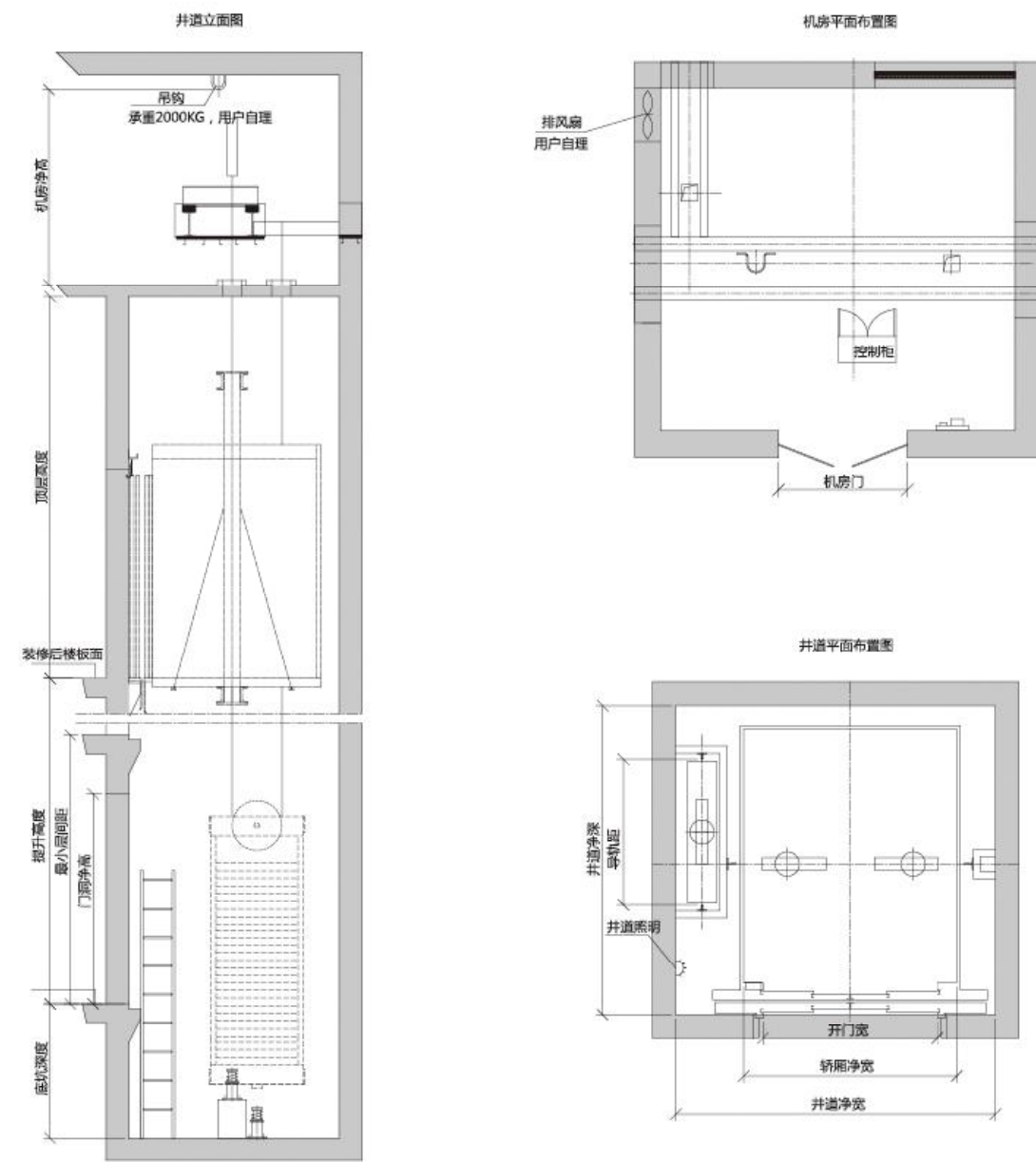
(本资料仅供设计选用参考,详细参数以技术图纸为准。)  
注:如若超出上述范围的规格,请与菱高快速电梯公司联系。

菱驾天地间·高处看世界

Linggao express elevators are popular all over the world overlook the world from height

# Explosion Proof cargo elevator Standard layout

## 防爆有机房货梯标准土建布置图

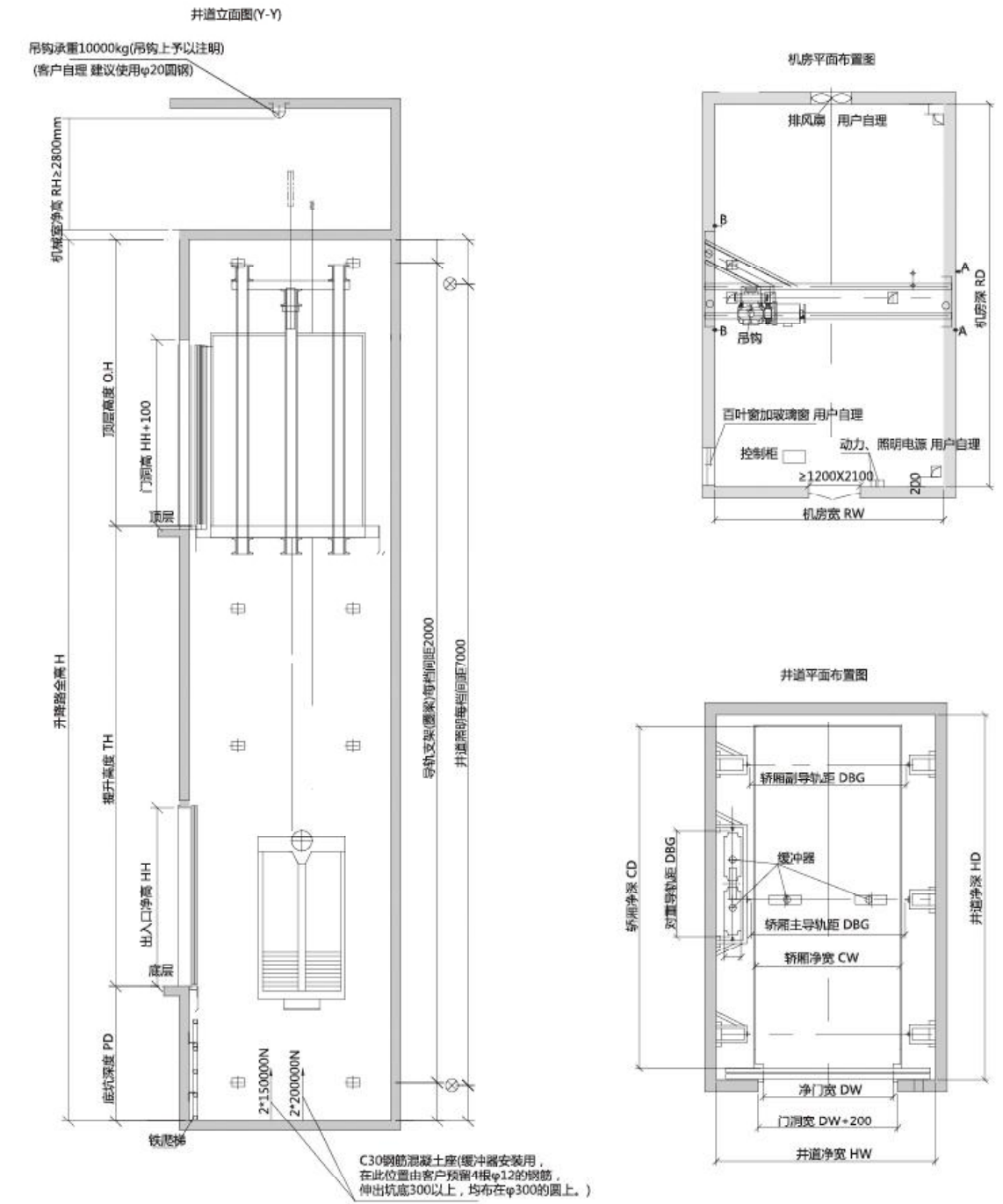


载重 (KG) Load	速度 (MS) Speed	轿厢尺寸 Car size	开门尺寸 Door-open size	井道尺寸(最小) Shaft(min)	底坑深度 Pit depth (mm)	顶层高度 Overhead Heigh (mm)	机房净尺寸 Net size of machine room	开门方式 Opening mode
		宽Wx深Dx高H (mm)	宽Wx深D (mm)	宽Wx深D (mm)			宽Wx深Dx高H (mm)	
1000	0.5	1300x1800x2200	1000x2100	2200x2300	1400	4200	3000x3500x2200	双折
1600	0.5	1600x2200x2200	1300x2100	2500x2700	1400	4500	3500x4000x2300	
2000	0.5	1600x2600x2200	1300x2100	2500x3200	1400	4500	3500x4200x2300	
		1900x2200x2200	1500x2100	2800x2700				
3000	0.5	2200x2700x2200	1800x2100	3300x3200	1700	4500	3500x4200x2300	双折中分

(本资料仅供设计选用参考,详细参数以技术图纸为准。)  
注:如若超出上述范围的规格,请与菱高快速电梯公司联系。

# Autobile elevator construction sketch

## 汽车电梯土建图



额定载重 kg	速度 m/s	门口宽度 DW×DH(mm)	轿厢内尺寸 CW×CD(mm)	轿厢外尺寸 CW×CD(mm)	井道尺寸 HW×HD(mm)	顶层高度 OH(mm)	底坑深度 PD(mm)	机房尺寸 RW×RH(mm)	机房高度 RH(mm)	开门方式 Opening Method	
3000	0.5	2600× 2400	2600× 5700	2670× 5831	4250× 6200	≥5100	≥1700	4250× 6200	≥2800	中分双折式单通	
				2670× 5892				4250× 6200		4250× 6200	中分双折式单通
5000	0.5	2700× 2400	3000× 7200	3070× 7331	4550× 7700	≥5100	≥1700	4550× 7700		4550× 7700	中分双折式单通
				3070× 7392				4550× 7700		4550× 7700	中分双折式单通

(本资料仅供设计选用参考,详细参数以技术图纸为准。)  
注:如若超出上述范围的规格,请与菱高快速电梯公司联系。



# All-round services

## 全方位服务



Before sale service

售前服务

### 电梯配置方案 Elevator configuration plans

菱高快速电梯的工程师们根据建筑的使用、美学特点，结合人流量、使用习惯、内外交通环境等参数，为客户在成本与性能方面寻求最佳平衡，选取最适合客户的电梯产品。

Linggao Express Elevator engineers seek the best balance in the aspects of cost and performance for vast clients according to building use, aesthetics characteristics in combination with passenger flow, operational habits, inner / outer traffic environment parameters etc. They help the clients to choose the most proper elevators.

### 土建工程方案 Construction project plans

菱高快速电梯的土建工程顾问将有预见性和准确研究并道基建环境，适时参与建筑规划与建造过程，确保以最小的施工量和面积满足电梯配置，为开发商赢得更多增值空间。

Construction project advisors of Linggao Express Elevator will predictably and accurately research into well infrastructure environments. They properly participate into construction planning and process. It ensures to satisfy the elevator configuration by minimum construction volume and area. It wins more and more value-adding spaces for vast developers.



Mid sale service

售中服务

### 安装调试 Installation & adjustment

电梯系统进入安装调试阶段，通常楼宇也开始交付使用，因此每个细节和进程的集约控制程度将对发展商、物业管理商和业主的利益产生直接的影响。菱高快速电梯的电梯安装工程监理人员拥有多年专业经验，会在最适合的时间进场安排，并能轻松驾驭各种复杂多变的安装环境。

When elevator system enters into installation and adjustment stages, usually the buildings will be delivered for use. Therefore intensive control progress for every detail and process directly influences the benefits of developer, housing property management and owners. Elevator installation project supervisors of Linggao Express Elevator own the years' professional experiences. They will arrange the most proper time for elevator shows. It can easily grasp various complex and changeable installation environments.

### 现场安装 Site installation

电梯的“总装配”在现场，现场安装是电梯装配的最重要的环节。菱高快速电梯委派专职的项目经理负责安装工程的计划、协调、人力调配及工程质量、安全管理等工作。每一个工程项目实施前，项目经理都要召开专题会议，严格制定施工方案及详细进行技术交底，并根据工地现场实际情况制定应急方案，确保按时、按质完成。

Elevator General Assembly at Site: Site installation is a key sector of elevator assembly. Linggao Express Elevator assigns special project manager to be responsible for installation project planning, coordination, labor dispatch, project quality supervision, safety management etc. before executing every project, Project Manager always convenes "Topic Meeting". It strictly formulates construction plans and detailed technical submission. It carries out emergency plans according to actual conditions at construction site. It guarantees prompt and high quality completion.



After sale services

售后服务

### 维保及更新服务 Maintenance and renewal

菱高快速电梯承诺：遇紧急维修，技术人员将在50分钟以内抵达全球任何一部投入使用的菱高快速电梯。

Pledge of Linggao Express Elevator: Upon emergency repair, technicians will arrive at any Linggao express elevator that is thrown into use all over the world within 50 minutes.

专业团队免费维护一年，分半个月、一个月、一个季度定期保养维修，每年年检，减少故障。

One year free maintenance from our professional teams: It is divided into half a month, monthly, seasonal regular repair and maintenance. Annual inspections reduce the trouble rates.

远程监控服务系统，是菱高快速电梯售后服务的重要组成部分。实施远程监控最大的优点就是能够在电梯运行尚处于“正常”时诊断出问题，使客户还未察觉到问题前就解决问题。

Long-Distance Monitor Service System is an important constituent of Linggao Express Elevator After Sale Service. Its maximum advantage is to diagnosis any problem while elevator is still in "normal" operation. It thus solves the problems before the clients are aware of the problems.

### 个性化服务 Individual services

菱高快速电梯的客服中心将呼叫热线、SMS客户管理系统、多媒体移动监控系统、技术帮助系统整合优化，成为与客户沟通的重要纽带，确保客户一年365天都能享受到值得信赖的服务。

Linggao Express Elevator Customer Service Center optimizes and integrates with Calling Hotline, SMS Customer Management System, Multi-Media Mobile Monitor System, Technical Help System. It becomes a significant tie with customer communication. It ensures that the clients enjoy our trustworthy services 365-day a year.

原厂配件库覆盖全国，供给充足，24小时支援客户召修要求，保证了最快的响应时间和最短的维修时间。

Original Parts Warehouses are wide-spreading all over the country with ample supply. It executes 24-hour support to the customers' "calling for repair". It ensures the quickest response time and the shortest repair period.

菱高快速电梯一贯重视保养技术的研发，针对不同梯种特性、使用环境，配合使用维修专用计算机、特殊工具和工装，制定独有的保养工艺流程。除了日常的保养工作外，针对客户的电梯实际运行状况，制定出个性化的保养方案，真正做到“预防为主，防范于未然”。

Linggao Express Elevator always thinks highly of researching into and developing maintenance technology. Aiming at different elevator characteristics and operational environments, it matches with maintenance special-purpose computer, special tools and tooling to formulate the particular maintenance craft and technological flow. Apart from daily maintenance, targeting upon the clients' actual elevator operation conditions, it works out individual maintenance plans. It truly fulfills the purpose of "mainly preventative measures to remove any hidden dangers".