

24小时服务热线
24-hour service hotline

4006-05-4007

菱高快速电梯有限公司

LINGGAO EXPRESS ELEVATOR CO., LTD.

地址: 江苏省苏州市吴江区震泽镇大船港开发区

Add: Big Ship Harbor Development Zone, Zhenze Town, Wujiang District, Suzhou City, Jiangsu Province, China

电话(Tel): 0512-63785176 0512-63785276

传真(Fax): 0512-63785876 邮编(P.C): 215231

E-mail: lg@gelevator.com

网址(Web): www.lgelevator.com

本书为一般信息类出版物, 我们保留随时更改产品设计和说明的权利。
本书的任何字句, 无论其字面意思或含义, 对于任何产品及该产品的用途和质量, 或者任何购销合同条款的表述与更改均不承担任何责任。

2020年1月份印刷



扫二维码进入菱高快速电梯官网
Scan two-dimensional code into
LINGGAO express elevator



LG Express Lift

LINGGAO EXPRESS ELEVATOR

载货电梯系列
Freight elevator series



STM 盛腾传媒 0573-8133500 18969047066

菱驾天地间 高处看世界

Linggao express elevators are popular all over the world
Overlook the world from height



从工艺到品质，从功能到性能，每一部被精心打造的电梯都经历了千锤百炼，凝聚了设计的力量，至此，让电梯丰富建筑，让建筑延伸梦想。菱高快速，在动静中融智慧，于无声处见精彩。

From technology to quality, from function to performance, every carefully manufactured elevator has been forged and tempered. It concentrates with design strength. Elevator enriches building. Building extends your dreams. Linggao express combines with intelligence in kinetic / static state. It peacefully sets forth splendor.



★ 引进美国技术 ★



★ 高标准安全生产 ★



★ 传奇品质典范 ★

Intellectual technology superb innovation

智能科技 极致创新



Highly integrated intellectual control system

高集成智能型控制系统

32位双CPU，主从CPU相互监控，更大程度提高了数据处理速度；系统内设置的高智能微电脑模块，对电梯运行实施最安全、精确、高效的管理控制。

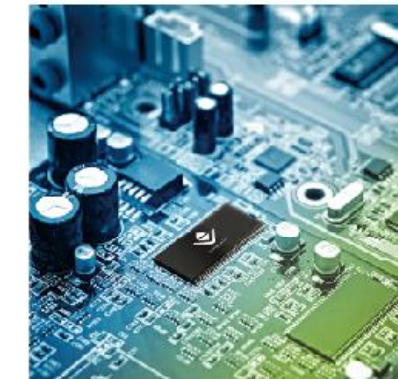
32-digit double-CPU and inter-monitor of master-slave CPU enhance data processing speed to a greater degree. System sets highly intellectual micro-computer module. It executes the most secure, accurate and effective management control to elevator operation.

Highly intellectual micro-computer system

高智能的微机系统

菱高快速载货电梯采用微机控制系统实现无触点控制，操作简便，可靠性高。对电梯进行全闭环的控制技术，有效提升运行性能，降低功耗。

Linggao express freight elevator applies micro-computer control system to fulfill non-contact control. It is simple and convenient in operation, high in reliability. It carries out fully closed loop control technology to elevator. It effectively increases running performance, reduces power consumption.



Light curtain protection

光幕保护

在电梯入口处形成一道道光幕保护屏障，对于任何进入其探测范围内的物体都能做出灵敏反应，有效地保护人货安全。在轿门所在平面具有密集的红红外光幕，人眼无法看见，使电梯入口更加美观。

It forms lots of light curtain protection barriers in elevator entry. It sensitively reacts to any object that enters into probing range. It effectively protects safety of both human and goods. It has intensive infrared light curtain in car door plane. It can not be seen by human eyes. It brings about the more attractive elevator entry.



AC variable frequency door machine

交流变频门机

采用先进技术的变频门机控制系统、交流变频电机和变频门机机械系统，不仅提高了电梯运行时的安全性和灵敏性，而且节能降耗，适于现代化运输越来越高的要求。

It applies variable frequency door machine control system, AC variable frequency motor, variable frequency door machine mechanical system with advanced technology. It enhances safe and sensitive elevator operation. It saves energy and loss. It adapts to the higher and higher modern transport requirements.



Dumbwaiter elevator

杂物电梯



窗口型 (上下直分)
Window type (Up and down directly separated)

落地型 (上下直分)
Ground type (Up and down directly separated)

菱高快速杂物电梯为各种建筑中的小型货梯提供快捷、方便、经济的垂直运输，大大节省时间及人力资源，可广泛适用于宾馆、饭店、银行、医院等场所供运送诸如饮食、餐具、日用品等物品之用。

Linggao express dumbwaiter elevator provides small freight elevators in various buildings with prompt, convenient, economical vertical transport. It greatly saves time, labor resource. It is widely applicable for delivering food, drink, dining ware, daily products etc. in hotel, restaurant, bank, hospital and so on.



- 1** 占用空间小，无需很强的土建承载力，无论对新旧建筑物均能实现完美、经济的设计。
It covers little space. It needs no strong construction bearing force. It always fulfills perfect and economical design for old and new buildings.
- 2** 使用先进的微机控制模块使电梯运行平稳、层准准确。
It applies advanced micro-computer control module to bring about smooth elevator operation and accurate leveling.
- 3** 人性化的设计使其操作更灵活。
Human-centered design brings about more flexible operation.
- 4** 由于其载重量小的特点，可以分为窗台式和推车式两种。
Because its loading capacity is small, it is divided into windowsill type and pushcart type.
- 5** 本系列杂物电梯安全、实用、雅致、宁静、操作灵活且易于维修，具有多种标准系列的品种和规格，亦可根据用户需求专门设计。
Dumbwaiter series are safe, practical, graceful, peaceful and flexible in operation, easy in repair. It has multiple standard specifications and varieties. It can be specially designed according to users' requirements.

Function Table

电梯功能表

控制功能 Control function

井道楼层距离自学习 Well and floor distance self-tuning	S
上电再平层 Power on re-leveling	S
轿内及层站微动指令按钮 Micro-touch button for car	S
启动保护控制 Start protection control	S
轿厢到站钟 Car arrival chime	O
变频驱动 VVVF drive	S
门机变频驱动 VVVF drive for door operator	S
轿厢副操纵箱 The second car operation panel	O

安全功能 Safety function

光幕保护 Light curtain protection	S
超载停梯 Overload holding stop	S
端站强迫减速保护 Terminal forced slow-down protection	S
上下限位及上下极限保护 Up/down limit and terminal protection	S
下行超速保护 Down over speed protection	S
上行超速保护 Up over speed protection	S
安全停层 Safely stop	S
紧急电动运行 Inching operation	S
检修操作 Inspection operation	S
停电应急平层装置 Power failure emergency leveling device	O
防捣乱 Anti- nuisance	S
消防返回 Fire emergency return	S

信息功能 Information function

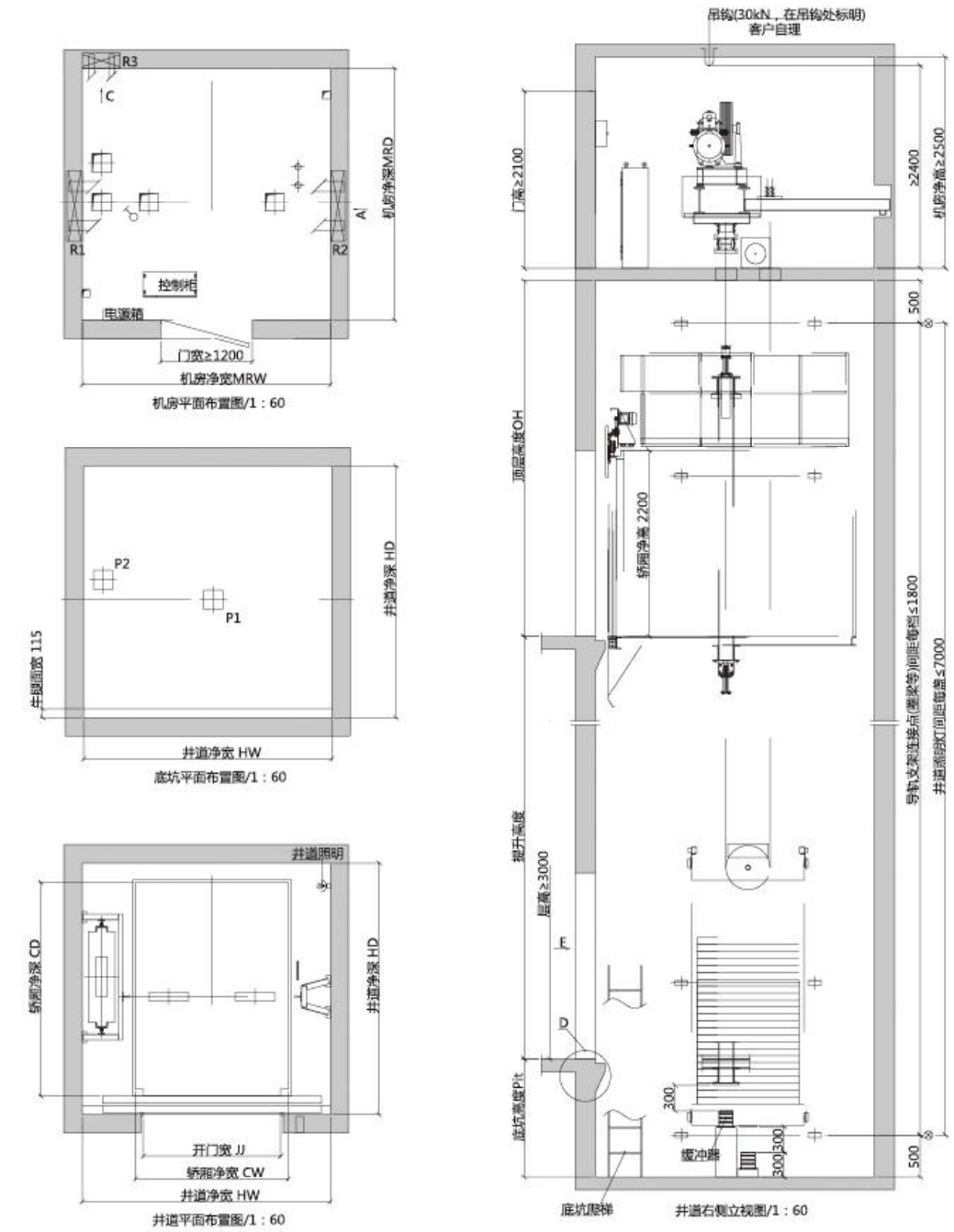
全集选控制 Full collective control	S
满载直驶 Full-load bypass	S
远程关闭 Main floor shut off	S
故障自诊断 Self diagnosis of breakdown	S
五方通话装置 Five-way communication	S
轿厢警铃 Car alarm	S
轿内楼层、方向指示 Floor and direction indicator in the car	S
层站楼层、方向指示 Floor and direction indicator at hall	S
语音报站 Voice announcement	O
交通指示 (汽车电梯) Traffic dispatch	O

乘客舒适功能 Comfortable function

应急照明 Emergency car lighting	S
轿厢风扇、照明自动关闭 Car ventilation light automatically shut off	S
电梯门重复开门 Repeated door closing	S
本层重开门 Reopen with hall call	S
即时开门 Express door closing	S
停梯开门 Car stop and door open	S
开门时间延长 Door opening time extending	S
S-标配 Standard O-可选 需加价 Optional	

Freight elevator construction sketch

载货电梯土建图



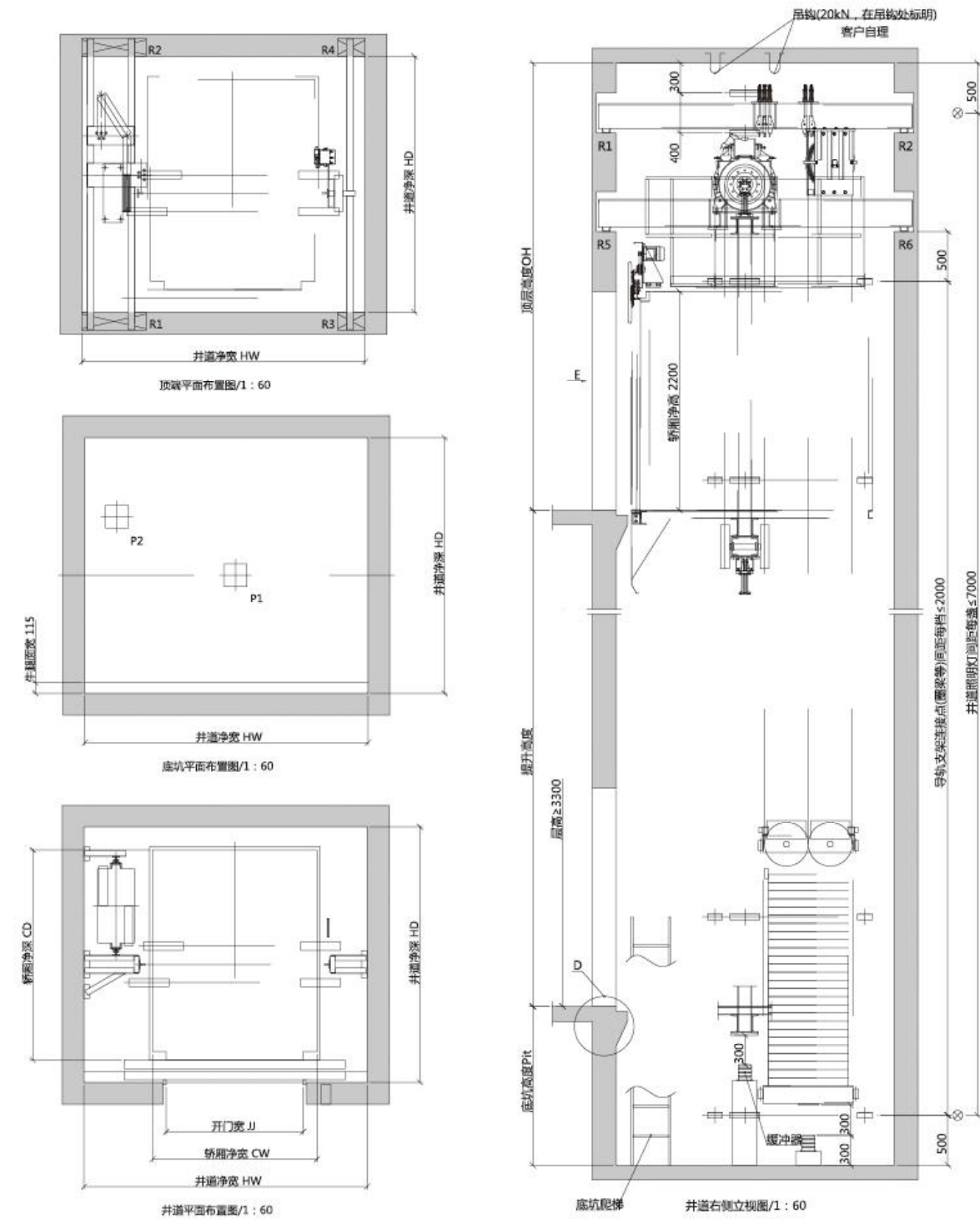
型号	载重 KG	速度 m/s	轿厢规格 (mm) CWxCD	开门尺寸 (mm) JJxOPH	井道尺寸 (mm) HWxHD	机房尺寸 (mm) MRWxMRD	底坑深度 (mm) Pit	顶层高度 (mm) OH	功率	作用力 (N)				
										R1	R2	R3	P1	P2
LGH(1000/0.5)	1000	0.5-1.0	1400x1700	1200x2100	2200x2200	2500x2500	1500	4200	7.5	54600	47800	6000	88000	68000
LGH(1600/0.5)	1600	0.5-1.0	1500x2300	1400x2100	2500x2800	2500x2800	1500	4200	11	67600	58200	7400	124000	92000
LGH(2000/0.5)	2000	0.5-1.0	1700x2300	1500x2100	2850x2800	2850x2800	1500	4200	11	85600	55200	8400	144000	104000
LGH(3000/0.5)	3000	0.5-1.0	2000x2800	1800x2100	3250x3300	3250x3300	1500	4200	15	144800	75200	12000	224000	164000
LGH(4000/0.5)	4000	0.25-0.5	2200x3300	2200x2300	3700x3800	3700x3800	1500	5000	18.5	190000	105200	16400	148000	108000
LGH(5000/0.5)	5000	0.25-0.5	2400x3600	2200x2300	3800x4100	3800x4100	1500	5000	22	213800	117200	18200	172000	122000

(本资料仅供设计选用参考,详细参数以技术图纸为准。)
注:如若超出上述范围的规格,请与菱高快速电梯公司联系。

菱驾天地间·高处看世界

Linggao express elevators are popular all over the world overlook the world from height

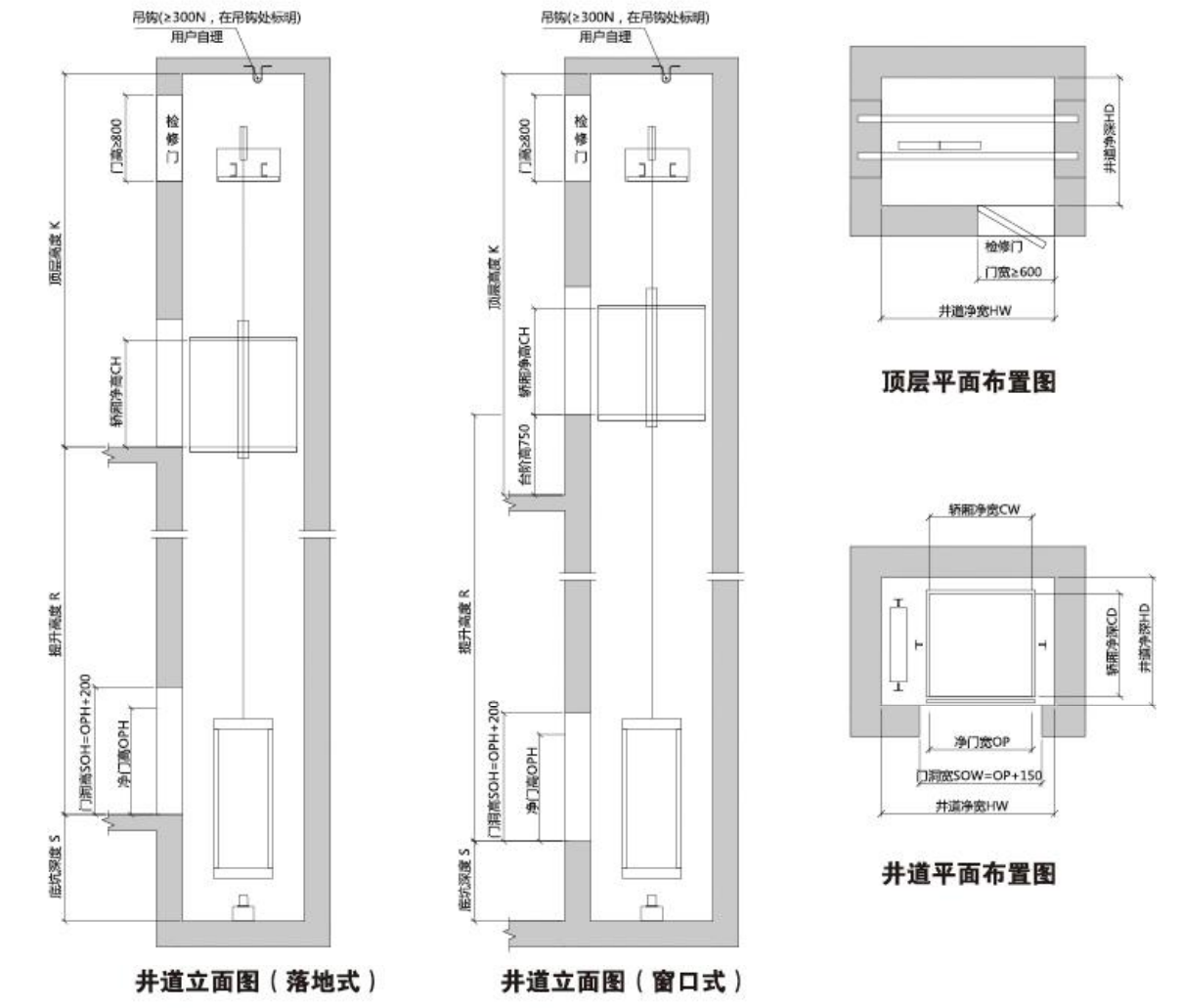
Machine roomless freight elevator construction sketch 无机房载货电梯土建图



型号	载重 KG	速度 m/s	轿厢规格 (mm) CWxCD	开门尺寸 (mm) JJxOPH	井道尺寸 (mm) HWxHD	底坑深度 (mm) Pit	顶层高度 (mm) OH	功率	作用力 (N)							
									R1	R2	R3	R4	R5	R6	P1	P2
LGHW(1600/0.5)	1600	0.5-1.0	1800x1900	1500x2100	3100x2400	1600	4500	5.2	40400	73600	29000	29000	22600	19400	124000	92000
LGHW(2000/0.5)	2000	0.5-1.0	1800x2300	1500x2100	3100x2800	1600	4500	6.0	40400	73600	29000	29000	22600	19400	124000	92000
LGHW(3000/0.5)	3000	0.5-1.0	2000x2800	1800x2100	3450x3500	1700	4700	10.7	60600	110400	43500	43500	33900	29100	224000	164000

(本资料仅供设计选用参考, 详细参数以技术图纸为准。)
注: 如若超出上述范围的规格, 请与菱驾快速电梯公司联系。

Dumbwaiter construction sketch 杂物电梯土建图



额定载重量 (kg)	100	200	250	300	
额定速度 (m/s)	0.4	0.4	0.4	0.4	
轿厢净尺寸 (mm)	宽	700	900	950	1000
	深	700	900	950	1000
开门方式	上下中分式				
开门尺寸 (mm)	宽	700	900	950	1000
	高	800	1000	1000	1200
井道净尺寸 (mm)	宽	1250	1450	1500	1550
	深	900	1100	1100	1200
顶层高度 (mm)	3900	3900	3900	3900	
底坑深度 (mm)	750	750	1000	1000	
最大提升高度 (m)	20	20	20	20	
工作方式	窗口式	窗口式	落地式	落地式	

(本资料仅供设计选用参考, 详细参数以技术图纸为准。)
注: 如若超出上述范围的规格, 请与菱驾快速电梯公司联系。

All-round services

全方位服务



Before sale service

售前服务

电梯配置方案 Elevator configuration plans

菱高快速电梯的工程师们根据建筑的使用、美学特点，结合人流量、使用习惯、内外交通环境等参数，为客户在成本与性能方面寻求最佳平衡，选取最适合客户的电梯产品。

Linggao Express Elevator engineers seek the best balance in the aspects of cost and performance for vast clients according to building use, aesthetics characteristics in combination with passenger flow, operational habits, inner / outer traffic environment parameters etc. They help the clients to choose the most proper elevators.

土建工程方案 Construction project plans

菱高快速电梯的土建工程顾问将有预见性和准确研究并道基建环境，适时参与建筑规划与建造过程，确保以最小的施工量和面积满足电梯配置，为开发商赢得更多增值空间。

Construction project advisors of Linggao Express Elevator will predictably and accurately research into well infrastructure environments. They properly participate into construction planning and process. It ensures to satisfy the elevator configuration by minimum construction volume and area. It wins more and more value-adding spaces for vast developers.



Mid sale service

售中服务

安装调试 Installation & adjustment

电梯系统进入安装调试阶段，通常楼宇也开始交付使用，因此每个细节和进程的集约控制程度将对开发商、物业管理商和业主的利益产生直接的影响。菱高快速电梯的电梯安装工程监理人员拥有多年专业经验，会在最适合的时间进场安排，并能轻松驾驭各种复杂多变的安装环境。

When elevator system enters into installation and adjustment stages, usually the buildings will be delivered for use. Therefore intensive control progress for every detail and process directly influences the benefits of developer, housing property management and owners. Elevator installation project supervisors of Linggao Express Elevator own the years' professional experiences. They will arrange the most proper time for elevator shows. It can easily grasp various complex and changeable installation environments.

现场安装 Site installation

电梯的“总装配”在现场，现场安装是电梯装配的最重要的环节。菱高快速电梯委派专职的项目经理负责安装工程的计划、协调、人力调配及工程质量、安全管理等工作。每一个工程项目实施前，项目经理都要召开专题会议，严格制定施工方案及详细进行技术交底，并根据工地现场实际情况制定应急方案，确保按时、按质完成。

Elevator General Assembly at Site: Site installation is a key sector of elevator assembly. Linggao Express Elevator assigns special project manager to be responsible for installation project planning, coordination, labor dispatch, project quality supervision, safety management etc. before executing every project, Project Manager always convenes "Topic Meeting". It strictly formulates construction plans and detailed technical submission. It carries out emergency plans according to actual conditions at construction site. It guarantees prompt and high quality completion.



After sale services

售后服务

维保及更新服务 Maintenance and renewal

菱高快速电梯承诺：遇紧急维修，技术人员将在50分钟以内抵达全球任何一部投入使用的菱高快速电梯。

Pledge of Linggao Express Elevator: Upon emergency repair, technicians will arrive at any Linggao express elevator that is thrown into use all over the world within 50 minutes.

专业团队免费维护一年，分半个月、一个月、一个季度定期保养维修，每年年检，减少故障。

One year free maintenance from our professional teams: It is divided into half a month, monthly, seasonal regular repair and maintenance. Annual inspections reduce the trouble rates.

远程监控服务系统，是菱高快速电梯售后服务的重要组成部分。实施远程监控最大的优点就是能够在电梯运行尚处于“正常”时诊断出问题，使客户还未察觉到问题前就解决问题。

Long-Distance Monitor Service System is an important constituent of Linggao Express Elevator After Sale Service. Its maximum advantage is to diagnosis any problem while elevator is still in "normal" operation. It thus solves the problems before the clients are aware of the problems.

个性化服务 Individual services

菱高快速电梯的客服中心将呼叫热线、SMS客户管理系统、多媒体移动监控系统、技术帮助系统整合优化，成为与客户沟通的重要纽带，确保客户一年365天都能享受到值得信赖的服务。

Linggao Express Elevator Customer Service Center optimizes and integrates with Calling Hotline, SMS Customer Management System, Multi-Media Mobile Monitor System, Technical Help System. It becomes a significant tie with customer communication. It ensures that the clients enjoy our trustworthy services 365-day a year.

原厂配件库覆盖全国，供给充足，24小时支援客户召修要求，保证了最快的响应时间和最短的维修时间。

Original Parts Warehouses are wide-spreading all over the country with ample supply. It executes 24-hour support to the customers' "calling for repair". It ensures the quickest response time and the shortest repair period.

菱高快速电梯一贯重视保养技术的研发，针对不同梯种特性、使用环境，配合使用维修专用计算机、特殊工具和工装，制定独有的保养工艺流程。除了日常的保养工作外，针对客户的电梯实际运行状况，制定出个性化的保养方案，真正做到“预防为主，防范于未然”。

Linggao Express Elevator always thinks highly of researching into and developing maintenance technology. Aiming at different elevator characteristics and operational environments, it matches with maintenance special-purpose computer, special tools and tooling to formulate the particular maintenance craft and technological flow. Apart from daily maintenance, targeting upon the clients' actual elevator operation conditions, it works out individual maintenance plans. It truly fulfills the purpose of "mainly preventative measures to remove any hidden dangers".